

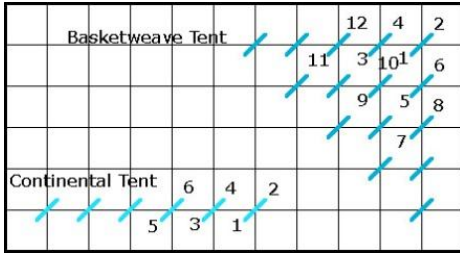
## X44 Large Package Wreath Stitch Guide

13" round #14 mesh canvas

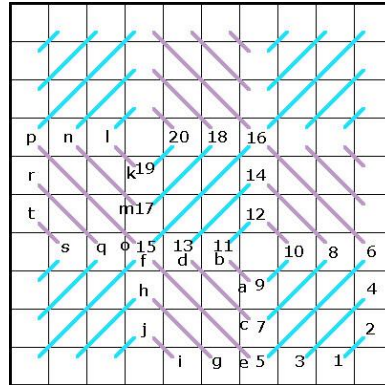


X44 Large Package Wreath is a great way to expand your needlepoint knowledge! You will learn 8 decorative stitches, on this 13" round #14 mesh hand-painted needlepoint canvas. It's cheerful, cute and a great way to use up those leftover skeins of thread. The perfect stash buster! The bright, colorful packages pop off the dark green background. Each decorative stitch area is uniquely created to highlight each stitch step, adapting them to specific areas. Compensation is painted on the canvas. 2 step color stitch diagrams included.

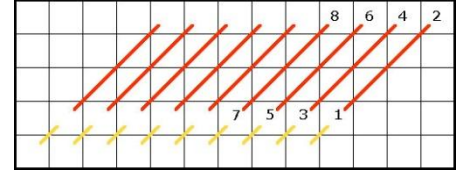
**Area 0**  
Tent Stitch



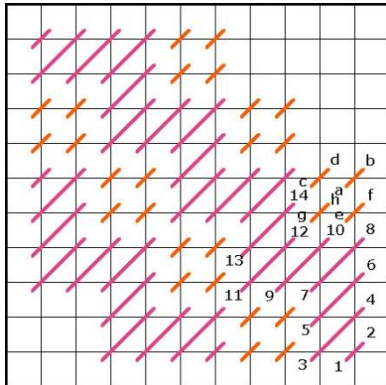
**Area 1**  
Reverse Scotch Stitch



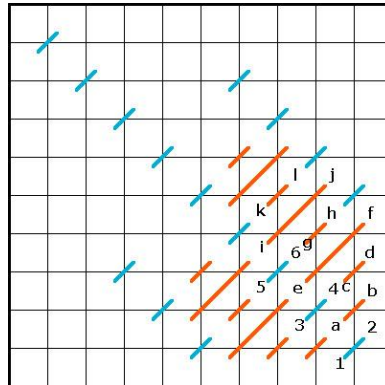
**Area 2**  
Slanted Gobelin Stitch



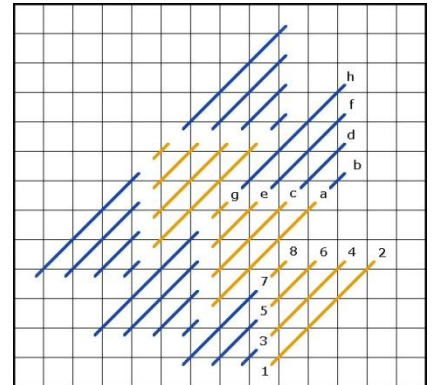
**Area 3**  
Staircase Stitch



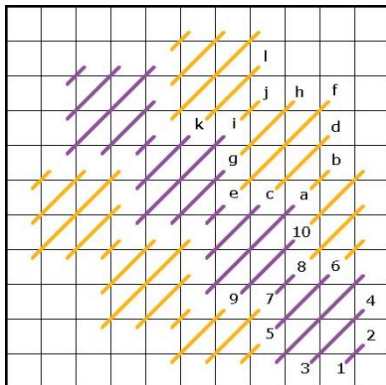
**Area 4**  
Mosaic Stripe Stitch



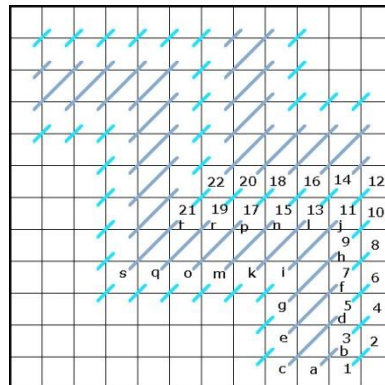
**Area 5**  
Milanese Stitch



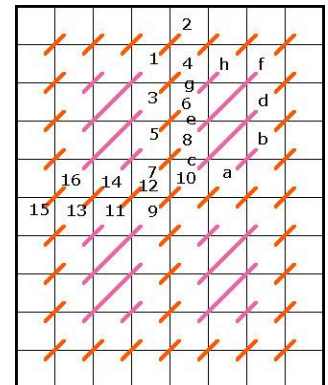
**Area 6**  
Diagonal Scotch Stitch



**Area 7**  
Jacquard Stitch



**Area 8**  
Framed Cashmere Stitch



Thread Pull List:

Write thread name on line & snip a small amount of the thread and tape next to name.

Area	Stitch	Thread Choice
0	Tent Stitch	
1	Reverse Scotch Stitch - Step 1	
	Reverse Scotch Stitch - Step 2	
2	Slanted Gobelin Stitch - Step 1	
	Slanted Gobelin Stitch - Step 2	
3	Staircase Stitch - Step 1	
	Staircase Stitch - Step 2	
4	Mosaic Stripe Stitch - Step 1	
	Mosaic Stripe Stitch - Step 2	
5	Milanese Stitch - Step 1	
	Milanese Stitch - Step 2	
6	Diagonal Scotch Stitch - Step 1	
	Diagonal Scotch Stitch - Step 2	
7	Jacquard Stitch - Step 1	
	Jacquard Stitch - Step 2	
8	Framed Cashmere - Step 1	
	Framed Cashmere - Step 2	

Notes: