

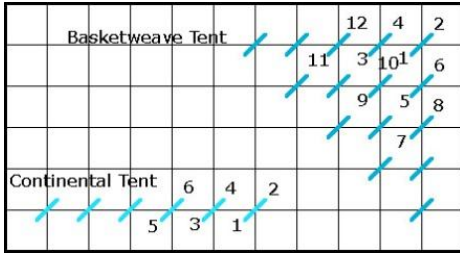
## X43 Snowman Mitten Stitch Guide

14" x 9" #14 mesh canvas

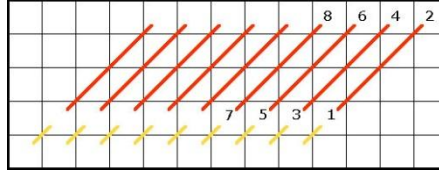


They hung the mittens on the chimney with care ... Needlepoint mittens the size of full sized stockings ... finished just like stockings. X43 Snowman Mitten is a great way to expand your needlepoint knowledge! You will learn 4 decorative stitches, on this 14" x 9" #14 mesh hand-painted needlepoint canvas. Each decorative stitch area is uniquely created to highlight each stitch step, adapting them to specific areas. Compensation is painted on the canvas. 2 step color stitch diagrams included.

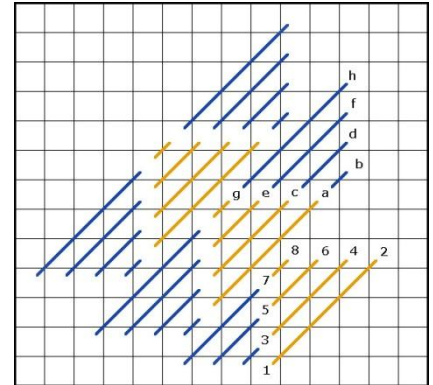
**Area 0**  
Tent Stitch



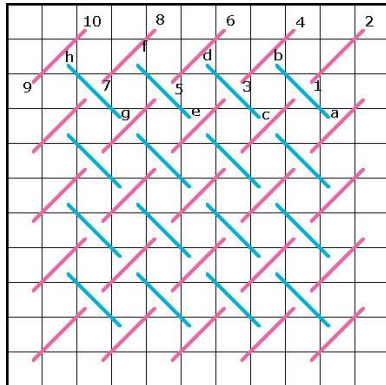
**Area 1**  
Slanted Gobelin Stitch



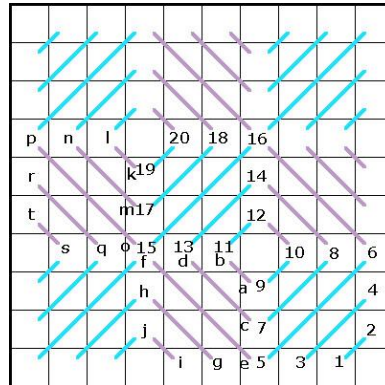
**Area 2**  
Milanese Stitch



**Area 3**  
Diagonal Weaving Stitch



**Area 4**  
Reverse Scotch Stitch



Thread Pull List:

Area	Stitch	Thread Choice
0	Tent Stitch	
1	Slanted Gobelin Stitch - Step 1	
	Slanted Gobelin Stitch - Step 2	
2	Milanese Stitch - Step 1	
	Milanese Stitch - Step 2	
3	Diagonal Weaving Stitch - Step 1	
	Diagonal Weaving Stitch - Step 2	
4	Reverse Scotch Stitch - Step 1	
	Reverse Scotch Stitch - Step 2	