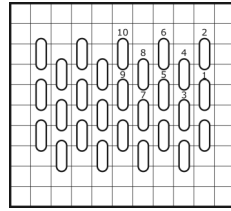
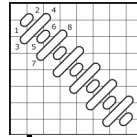


Barbara Bergsten Designs  
ST04 Patchwork Small Tote  
5" x 5" 14 mesh  
Stitch Guide

www.barbarabergstendesigns.com

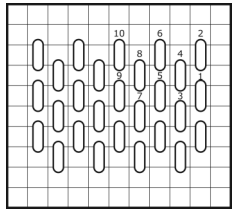
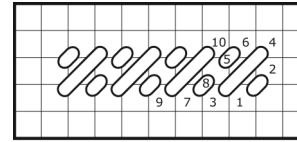


White Diamonds:  
Mosaic Stripe

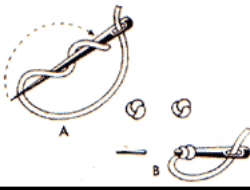


Blue Squares:  
Brick Stitch

Flowers:  
Modified  
Mosaic Stitch

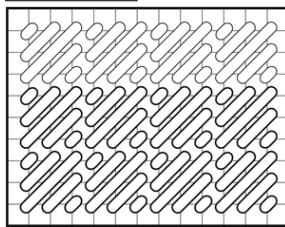
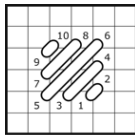


Blue Dots:  
French Knot Stitch

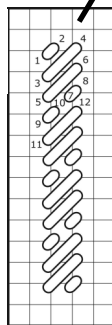


Blue Ribbon:  
Modified  
Brick Stitch

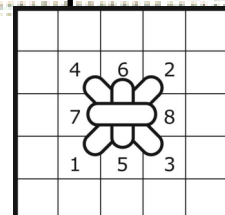
Dark Pink:  
Scotch Stitch



Light Pink:  
Cashmere Stitch

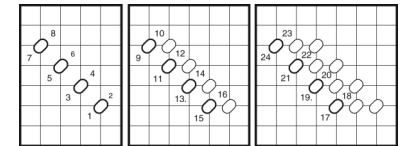


Green Dots:  
Smyrna Cross

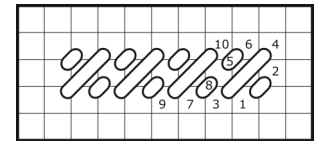


Blue Gingham:  
Scotch Checker Stitch

Stems:  
Basketweave Stitch  
Boucle Thread (loose pull)



Squares:  
Mosaic Stitch



Green Diamonds:  
Brick Filling on  
the diagonal

