

PS16 Beach House Stitch Guide PS16A

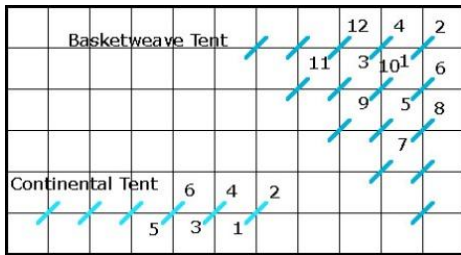
10" x 10" #14 mesh canvas

8" x 8" #18 mesh

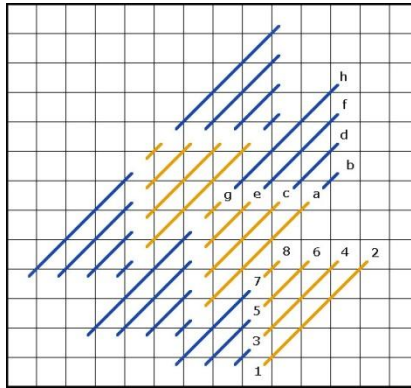


Bright and tropical PS16 Painted Stitches Beach House is a great way to expand your needlepoint knowledge! You will learn 9 decorative stitches, on this 10" x 10" #14 mesh hand-painted needlepoint canvas. The canvas includes a wide variety of decorative needlepoint stitches. Each decorative stitch area is uniquely created to highlight each stitch step, adapting them to specific areas. Compensation is painted on the canvas. 2 step color stitch diagrams included.

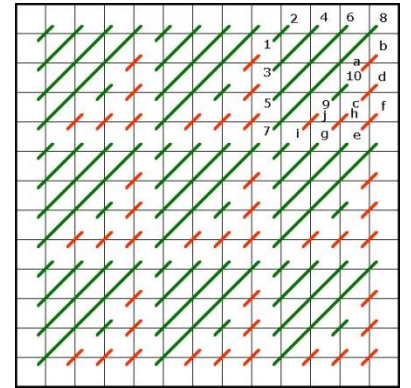
Area 0
Tent Stitch



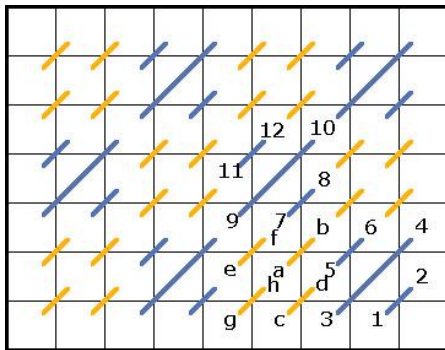
Area 1
Milanese Stitch



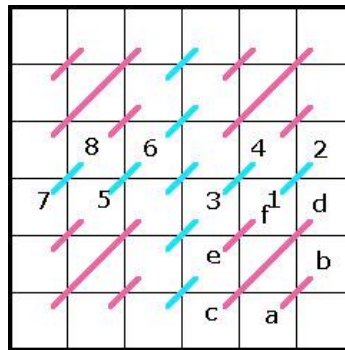
Area 2
Arrowhead Stitch



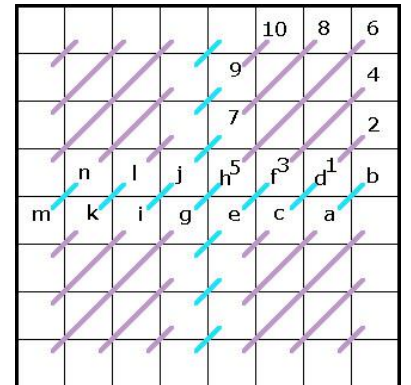
Area 3
Mosaic Checker Stitch



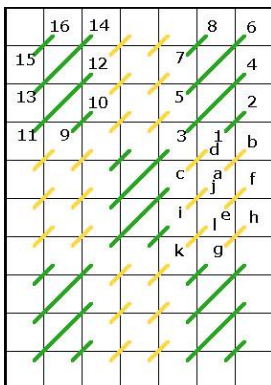
Area 4
Framed Mosaic Stitch



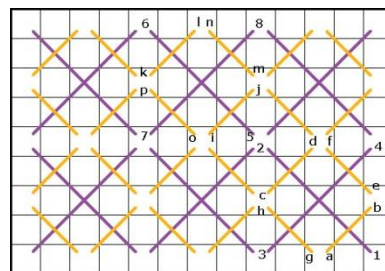
Area 5
Framed Scotch Stitch



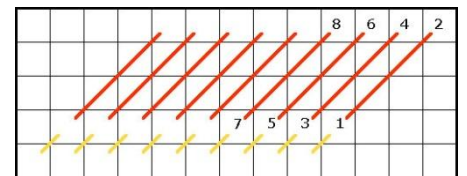
Area 6
Cashmere Checker Stitch



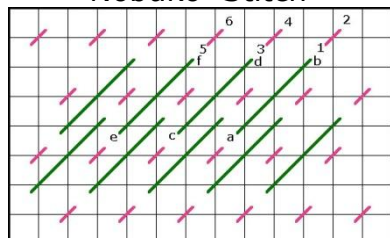
Area 7
Rice Stitch



Area 8
Slanted Gobelin Stitch



Area 9
Nobuko Stitch



Thread Pull List:

Write thread name on line
& snip a small amount of
the thread and tape next to
name.

Area	Stitch	Thread Choice
1	Milanese Stitch - Step 1	
	Milanese Stitch - Step 2	
2	Arrowhead Stitch - Step 1	
	Arrowhead Stitch - Step 2	
3	Mosaic Checker Stitch - Step 1	
	Mosaic Checker Stitch - Step 2	
4	Framed Mosaic Stitch - Step 1	
	Framed Mosaic Stitch - Step 2	
5	Framed Scotch Stitch - Step 1	
	Framed Scotch Stitch - Step 2	
6	Cashmere Checker - Step 1	
	Cashmere Checker - Step 2	
7	Rice Stitch - Step 1	
	Rice Stitch - Step 2	
8	Slanted Gobelin Stitch - Step 1	
	Slanted Gobelin Stitch - Step 2	
9	Nobuko Stitch - Step 1	
	Nobuko Stitch - Step 2	