

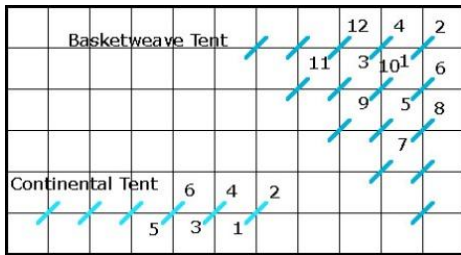
PS13 Sea Turtles Stitch Guide

12.25" x 10.75" #14 mesh canvas

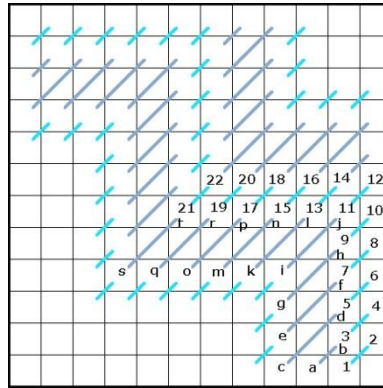


Design popping PS13 Painted Stitches Sea Turtles is a great way to expand your needlepoint knowledge! You will learn 9 decorative stitches, on this 12.25" x 10.75" #14 mesh hand-painted needlepoint canvas. The canvas includes a wide variety of decorative needlepoint stitches. Each decorative stitch area is uniquely created to highlight each stitch step, adapting them to specific areas. Compensation is painted on the canvas. 2 step color stitch diagrams included.

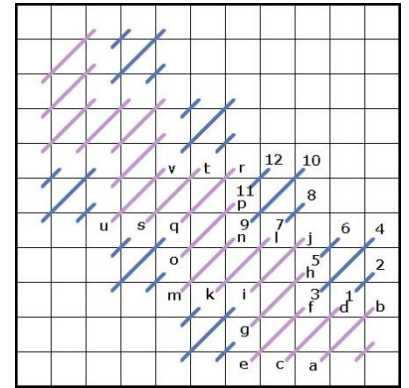
Area 0
Tent Stitch



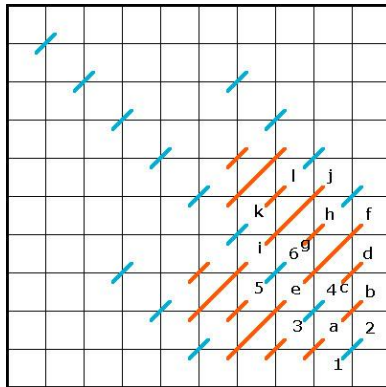
Area 1
Jacquard Stitch



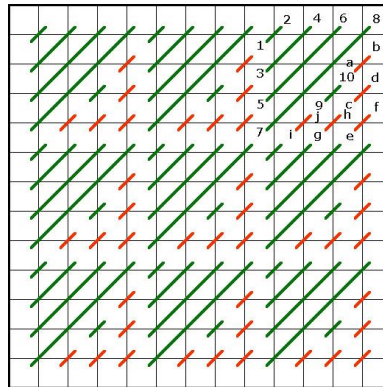
Area 2
Diagonal Hungarian Ground



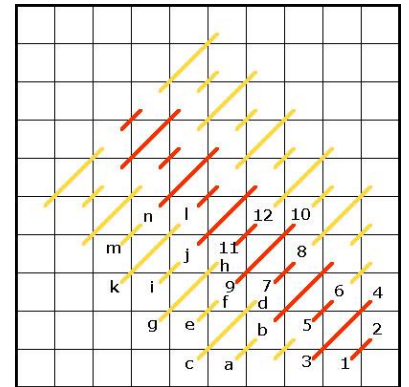
Area 3
Mosaic Stripe Stitch



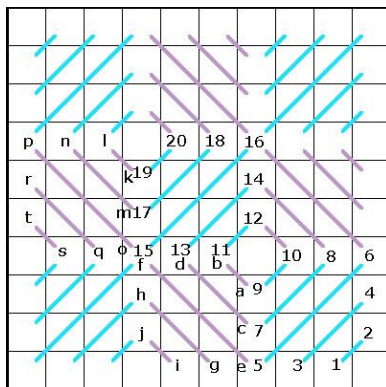
Area 4
Arrowhead Stitch



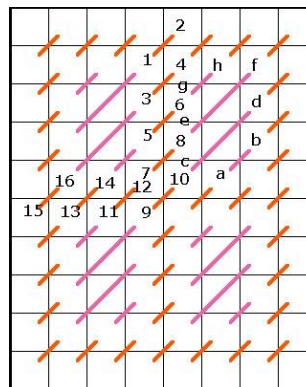
Area 5
Diagonal Florentine Stitch



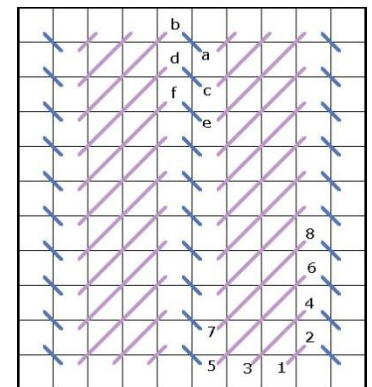
Area 6
Reverse Scotch Stitch



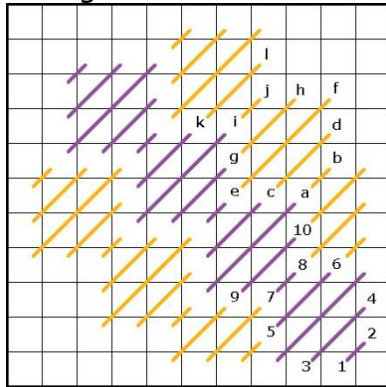
Area 7
Framed Cashmere Stitch



Area 8
Corduroy Stitch



Area 9
Diagonal Scotch Stitch



Thread Pull List:

Write thread name on line
 & snip a small amount of
 the thread and tape next to
 name.

Area	Stitch	Thread Choice
1	Jacquard Stitch - Step 1	
	Jacquard Stitch - Step 2	
2	Diagonal Hungarian Ground - Step 1	
	Diagonal Hungarian Ground - Step 2	
3	Mosaic Stripe Stitch - Step 1	
	Mosaic Stripe Stitch - Step 2	
4	Arrowhead Stitch - Step 1	
	Arrowhead Stitch - Step 2	
5	Diagonal Florentine Stitch - Step 1	
	Diagonal Florentine Stitch - Step 2	
6	Reverse Scotch Stitch - Step 1	
	Reverse Scotch Stitch - Step 2	
7	Framed Cashmere Stitch - Step 1	
	Framed Cashmere Stitch - Step 2	
8	Corduroy Stitch - Step 1	
	Corduroy Stitch - Step 2	
9	Diagonal Scotch Stitch - Step 1	
	Diagonal Scotch Stitch - Step 2	