

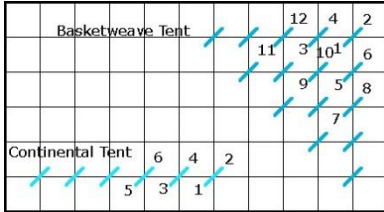
PS07 Painted Stitches Palm Stitch Guide

6" x 6" 14 mesh canvas

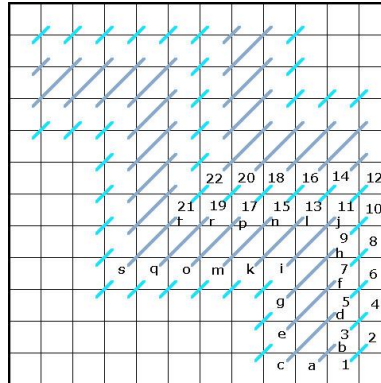


Bright and colorful, PS07 Painted Stitches Palm is a great way to expand your needlepoint knowledge! You will learn 7 decorative stitches, on this 6" x 6" #14 mesh hand-painted needlepoint canvas. The canvas is set up as "Sister Stitches". "Sister Stitches" are stitches that are similar but somewhat different. By learning the first stitch the second stitch will be easier to learn. Each decorative stitch area is uniquely created to highlight each stitch step, adapting them to specific areas. Compensation is painted on the canvas. 2 step color stitch diagrams included.

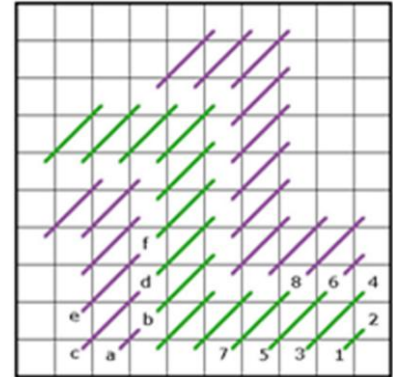
Area 1
Tent Stitch



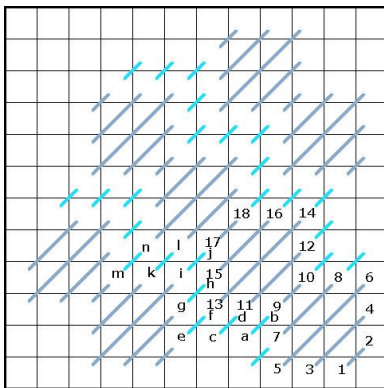
Area 2
Jacquard Stitch



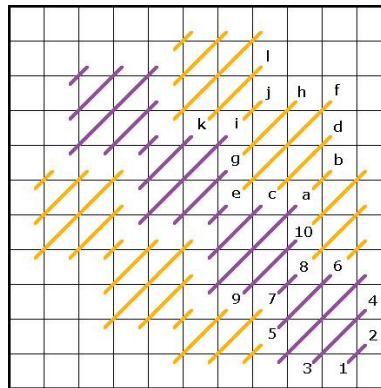
Area 3
Byzantine Stitch



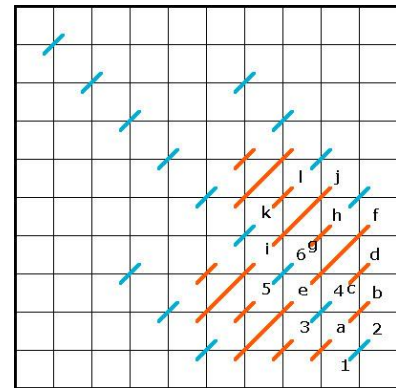
Area 4
Moorish Stitch



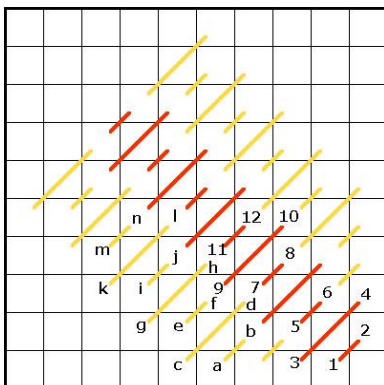
Area 5
Diagonal Scotch Stitch



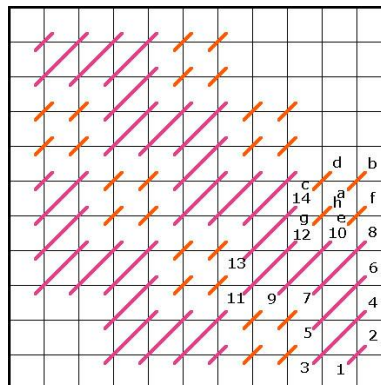
Area 6
Mosaic Stripe Stitch



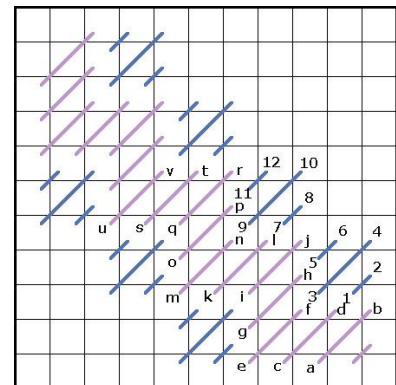
Area 7
Diagonal Florentine Stitch



Area 8
Staircase Stitch



Optional Area 8
Diagonal Hungarian Ground
Stitch



Area	Stitch	Thread Choice
1	Tent Stitch - Background	
	Tent Stitch - Coconut	
	Tent Stitch - Coconut	
	Tent Stitch - Coconut	
2	Jacquard Stitch - Step 1	
	Jacquard Stitch - Step 2	
3	Byzantine Stitch - Step 1	
	Byzantine Stitch - Step 2	
4	Moorish Stitch - Step 1	
	Moorish Stitch - Step 2	
5	Diagonal Scotch Stitch - Step 1	
	Diagonal Scotch Stitch - Step 2	
6	Mosaic Stripe Stitch - Step 1	
	Mosaic Stripe Stitch - Step 2	
7	Diagonal Florentine Stitch - Step 1	
	Diagonal Florentine Stitch - Step 2	
8	Staircase Stitch - Step 1	
	Staircase Stitch - Step 2	
8 optional	Diagonal Hungarian Ground Stitch - Step 1	
	Diagonal Hungarian Ground Stitch - Step 2	

