

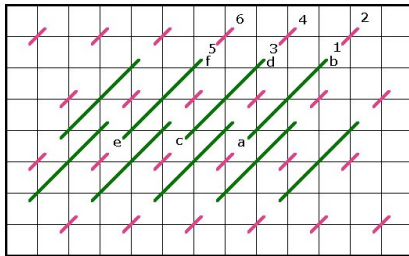
PS05 Painted Stitches Bee Stitch Guide

5" x 5" 14 mesh canvas



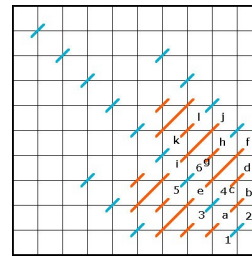
Simple, fun, and colorful PS05 Painted Stitches Bee is surefire way to learn decorative stitches and expand your needlepoint knowledge! The canvas is uniquely created to highlight each stitch step! You will learn 4 decorative stitches, adapting them to specific areas, on this 5" x 5" #14 mesh canvas. This is a great beginners piece or stash sticher.

Block 1



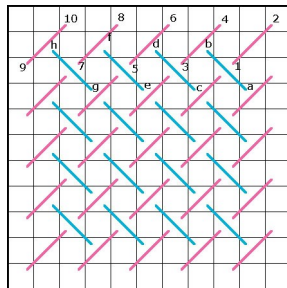
Nobuko Stitch

Block 2



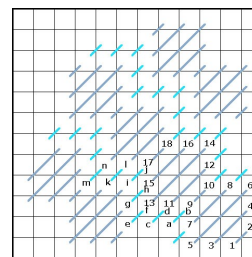
Mosaic Stripe Stitch

Block 3



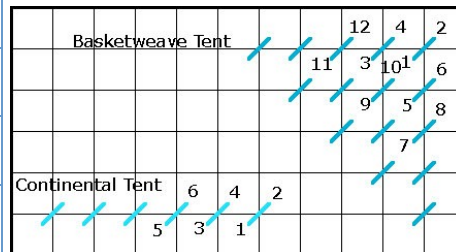
Diagonal Weaving Stitch

Block 4



Moorish Stitch

Block 5



Tent Stitch

Area	Stitch	Thread Color
1	Nobuko Stitch	Yellow Dark Yellow
2	Mosaic Stripe Stitch	Blue Dark Blue
3	Diagonal Weaving Stitch	Aqua Dark Auqa
4	Moorish Stitch	Blue Dark Blue
5	Tent Stitch	Black

Notes:

- Reverse Mosaic Stitch can be used for the eyes. (Long stitch over 2, short stitch over 1)
- Scotch Stitch can be used for the end of the antennae.
- All other black stitches are tent stitch.