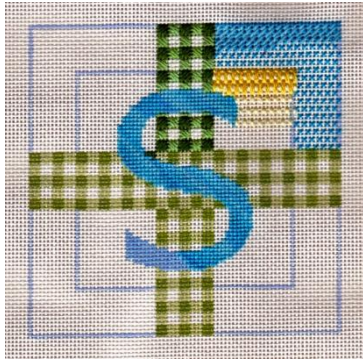


Initially Stitches 6" x 6" Tote Square

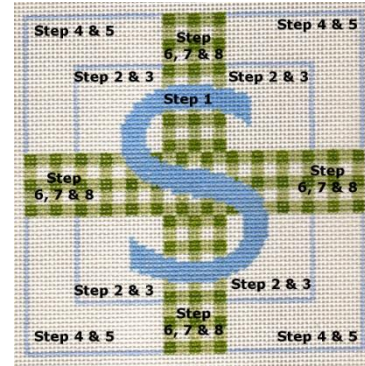


Materials:

Initially Stitches
6" x 6" Canvas

8 fiber colors

All threads are to be used as single strand

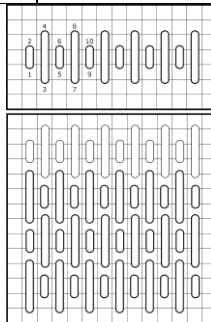


Instructions:

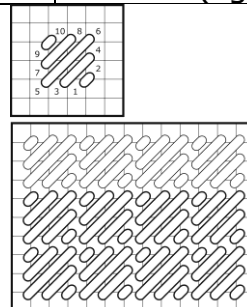
- Before class choose color theme, order tote bag, and pick all threads. Please stitch center Initial in Basketweave Tent Stitch

Step	Design Area	Stitch	Thread
Step 1	Initial	Basketweave Tent Stitch	Color 1
Step 2	Inner Block	Parisian Stitch Short	Color 7 (light)
Step 3	Inner Block	Parisian Stitch Long	Color 8 (dark)
Step 4	Outer Block	Nobuko Stitch Short	Color 5 (dark)
Step 5	Outer Block	Nobuko Stitch Long	Color 6 (light)
Step 6	Gingham Ribbon	Scotch Stitch	Color 2 (dark)
Step 7	Gingham Ribbon	Reverse Scotch Stitch	Color 3 (medium)
Step 8	Gingham Ribbon	Basketweave Tent Stitch	Color 4 (light)

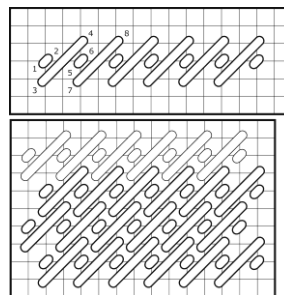
Parisian



Scotch



Nobuko



Scotch Reverse

